

IBM Sterling Document Conversion Services

Translates fax, email and PDF into EDI

Highlights

- Convert manual transactions like fax, email and PDF into EDI.
- Enhance community visibility and reporting.
- Automate manual processes to reduce errors and save time.
- Enforce business rules at document and process levels.

According to a 2019 IDC survey, “more than 33% of organizations still use manual forms and fax for their business transactions.” Translating them to EDI manually is costly, time consuming and error prone. Participation in B2B programs still remains out of reach for many organizations due to lack of technical skills, outdated technology or budgetary restrictions.

IBM Sterling Document Conversion Service is a cloud-based solution that translates fax-to-EDI as well as all orders, invoices and tenders received in formats like email, postal mail, PDF, etc. from your partners or customers into EDI or XML format.

It helps extend B2B capabilities to your business partners, regardless of their size, technical expertise or budget restrictions.

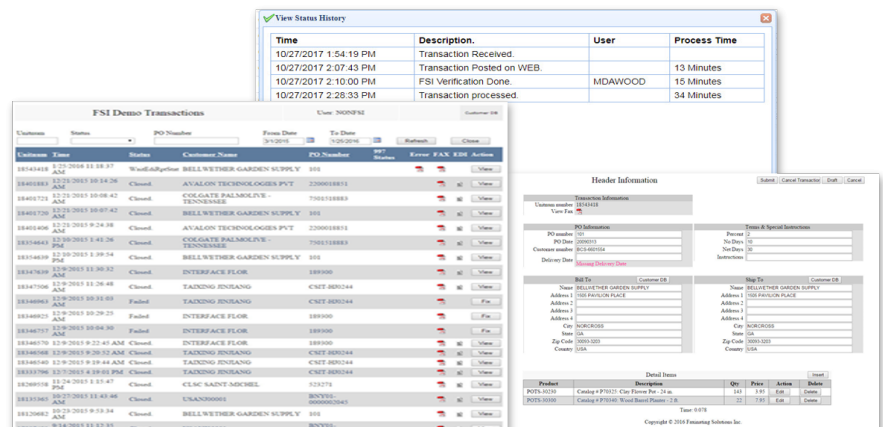


Image: Screen capture of the Document Conversion Services dashboard shows a summary of EDI transactions and their status.

Benefit	Feature
Converts faxes, and paper-based documents into EDI or XML format.	<ul style="list-style-type: none"> • Helps reduce costs by eliminating manual processes of dealing with faxes, email and postal mail. • Detects and handles errors, minimizes human intervention. • Identifies Handwriting and supports multiple languages.
Business rule Customization.	<ul style="list-style-type: none"> • Flexibility of integrating business rules determined by your needs. • Assists with a list of possible results, for the services specialist to choose.
Consolidated business process.	<ul style="list-style-type: none"> • Helps streamline your business processes to control spending and protect margins. • Helps eliminate exchange of paper documents, faxes and phone calls with your small and seasonal partners.
Community visibility and reporting.	<ul style="list-style-type: none"> • Offers a single view into your community of trading partners • Helps manage community contact through inbound and outbound document queues. • Helps extract primary data automatically and secondary data manually.
Maximize partner participation.	<ul style="list-style-type: none"> • Helps minimize the cost and process impact to small suppliers. • Designed to improve supplier cycle times and cash flow. • Can free up resources to focus on running the business.
System security	<ul style="list-style-type: none"> • Enforces strict password protection policies, unattended timeouts and logout features

With Sterling Document Conversion Services you can eliminate re-keying the manual orders, invoices or tenders received in as fax, email or pdf with a high level of efficiency and accuracy. It uses advanced technologies that avoids problems by detecting errors early and handles them more efficiently. It can also help lower B2B costs and improve cycle times and supply-chain visibility.

Why IBM?

IBM Sterling Document Conversion Services translates non-structured documents like fax, email, PDF, etc. into an EDI or other structured formats, and offers an electronic alternative to the inefficient manual transactions.

IBM Sterling Document Conversion Services constitutes to IBM Sterling Supply Chain Business Network, which is the core of the IBM Sterling Supply Chain Suite.

IBM Sterling Supply Chain Business Network (SCBN) is a cloud-based, digital business network that enables you to streamline collaboration with customers, suppliers, and trading partners across your supply chain by digitizing and automating B2B transactions.

Next steps

- [Watch Greenworks Video Case Study \(2 minutes\)](#)
- [Document Conversion Services Web Page](#)
- [Read Huhtamaki Case Study](#)

For more information

To learn more about Sterling Document Conversion Services, please contact your IBM representative or IBM Business Partner, or visit the following website:
ibm.com/marketplace/document-conversion-services

© Copyright IBM Corporation 2020.

IBM, the IBM logo, and ibm.com are trademarks of International Business Machines Corp., registered in many jurisdictions worldwide. Other product and service names might be trademarks of IBM or other companies. A current list of IBM trademarks is available on the Web at <https://www.ibm.com/legal/us/en/copytrade.shtml>, and select third party trademarks that might be referenced in this document is available at https://www.ibm.com/legal/us/en/copytrade.shtml#section_4.

This document contains information pertaining to the following IBM products which are trademarks and/or registered trademarks of IBM Corporation:
WebSphere®



All statements regarding IBM's future direction and intent are subject to change or withdrawal without notice, and represent goals and objectives only.